

# IBM Spectrum Protect Plus

## Simplify data recovery and data reuse for VMs, files, databases and applications

---

### Highlights

- Achieve rapid VM, file, database, and application recovery
  - Protect industry-leading databases and applications
  - Reduce the burden on IT staff with self-service data access
  - Lower data retention costs with data offload to multiple cloud services
  - Leverage space-efficient snapshots, deduplication and compression
  - Simplify management with centralized dashboard and SLA-based policies
  - Enable orchestration and automation with RESTful APIs
  - Protect your backup repository and catalog with multi-site replication
  - Lock down data as part of an overall cyber resiliency plan
  - Speed deployment with virtual appliance and agentless architecture
- 

Organizations struggle with the cost and complexity of protecting data as they embrace digital transformation, manage data growth, and tackle the requirements of always-on services. Rapid data recovery and data reuse are required. Virtual environments are ubiquitous, so supporting VM, file, database, and application recovery in VMware and Microsoft Hyper-V environments is critical to an organization's success. Data protection also needs to align with cyber security objectives and data compliance requirements, such as secure data retention mandates.

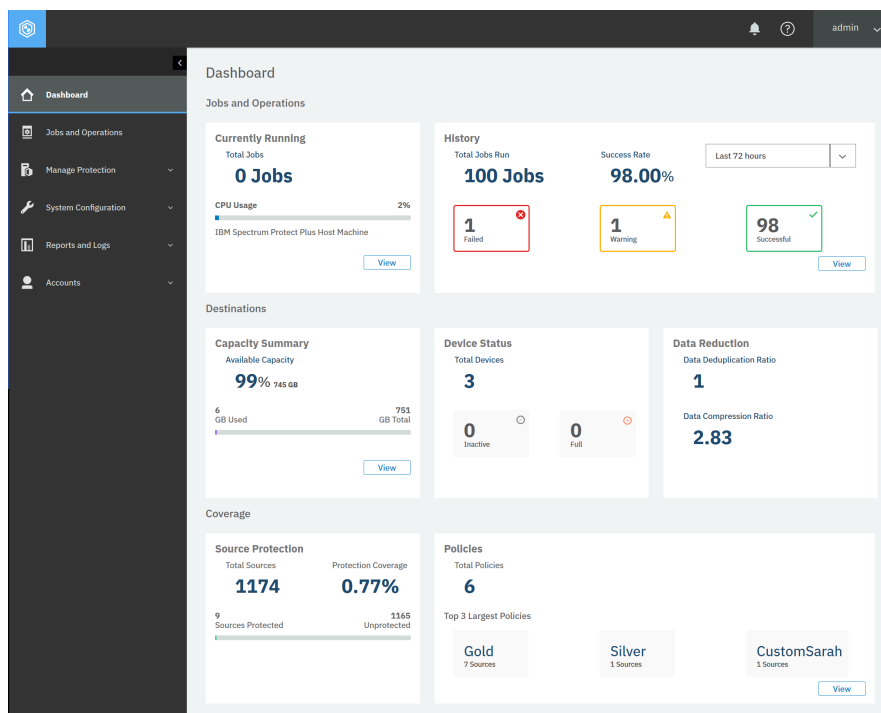
Given these challenges, organizations are seeking an all-in-one data protection solution designed for virtual machines, files, and both virtualized and physical databases and applications. They want a solution that is easy to deploy and simple to manage. Self-service access to data is also important. And enterprise IT demands scalability, reliability, storage efficiency, automation, data compliance, and options for low-cost long-term data retention

IBM Spectrum Protect Plus is a modern data protection solution that simplifies rapid VM, file, database, and application recovery. It unlocks the value of your data to facilitate data reuse and accelerate DevOps, analytics, and much more. Spectrum Protect Plus is easy to deploy as a virtual appliance and the agentless architecture is easy to maintain. Management simplicity is enabled with a centralized dashboard and policy-based templates enable self-service, streamline operations, and help ensure SLA compliance. Automation is accomplished using REST APIs to integrate with third party tools and solutions, such as Puppet and ServiceNow. Cost-effective long-term data retention, data compliance, and disaster recovery are achieved via data offload to multiple cloud services.

## Easy setup and operation

IBM Spectrum Protect Plus deploys quickly as a virtual appliance. Once in place, IBM Spectrum Protect Plus builds a catalog of VMs, files, and databases. For hypervisor-based backups, IBM Spectrum Protect Plus uses data protection APIs, eliminating the need for backup agents. For database and application backups, IBM Spectrum Protect Plus leverages touchless agents that are fully managed. IBM Spectrum Protect Plus also offers easy configuration of backup targets and pre-configured SLAs. This powerful combination means IBM Spectrum Protect Plus can begin protecting virtual environments, databases, and applications in less than an hour.

To streamline ongoing operations, IBM Spectrum Protect Plus has a built-in dashboard that provides a quick view of storage utilization and data protection status. Dashboard drilldowns help with troubleshooting and alerts are tied to the event log, so administrators are proactively notified before potential issues become a real problem, such as when storage threshold limits are approaching.



*The IBM Spectrum Protect Plus drilldown dashboard with built-in alerting provides timely status information.*

In addition, SLA-centric management with pre-defined and custom policy workflows automates protection management. New systems can be easily tagged and automatically added to appropriate SLA policies.

## Multi-workload support and rapid data recovery

IBM Spectrum Protect Plus creates and maintains a global catalog of protected VMs, files, databases, and applications, enabling administrators to see what is protected, and more importantly, what isn't. When the need to recover data arises, the catalog and search interface enables administrators to quickly identify what they want to recover, eliminating the need to sort through hundreds of objects and recovery points.

IBM Spectrum Protect Plus provides support for databases and applications running on physical or virtual machines, including Microsoft SQL, Oracle, Db2, MongoDB, and Exchange. Management of database and application backups can be done using SLA-based policy templates, which means no specialized tools or scripting is required. RBAC enables database administrators to manage data protection and IBM Spectrum Protect Plus provides application-consistent database recovery, which enables near-zero data loss. Exchange support includes individual mailbox item-level restore functionality.

IBM Spectrum Protect Plus utilizes incremental forever backup technology and stores data in native formats. As a result, IBM Spectrum Protect Plus enables instant data access, so administrators can quickly restore operations.

## Data offload to multiple cloud services

IBM Spectrum Protect Plus integrates with object storage APIs to provide low-cost, long-term data retention and disaster recovery for all supported workloads (VMs, databases and applications). Data offload options supported by IBM Spectrum Protect Plus include cloud services (IBM Cloud Object Storage service, AWS, and Microsoft Azure), on-premises object storage (IBM COS) and IBM Spectrum Protect.

IBM Spectrum Protect Plus policies support data offloading; therefore, a single data protection policy can govern data backup, replication, and offload. Additionally, secure long-term data storage can be achieved using IBM Cloud Object Storage immutable object storage features, such as retention enabled buckets. This ability to lock down data is important as part an overall cyber resiliency plan.

## Unlock the value from backup data

IBM Spectrum Protect Plus is more than a backup solution. You can use it to derive tremendous business value from your backup data. With IBM Spectrum Protect Plus, you can quickly and easily spin up databases, applications, and virtual machines, or mount Virtual Machine Disk files (VMDKs). These data copies can then be utilized when users need quick, easy access to data. Examples are DevOps, test-dev, reporting and analytics.

Self-service portals, SLA-based policies, and RBAC enable non-storage and backup staff, such as database and application teams to manage backup, recovery, and data management tasks, which reduces the workload on IT staff. Administrators use predefined roles to limit a user's access. For example, a backup administrator may be given full access, while an application owner may only be able to access copies of specific data sets.

## **Orchestration and automation**

Restful APIs enable data owners and administrators to integrate backup and copy processes with third-party tools and solutions, such as Puppet and ServiceNow. This powerful service-level integration helps organizations streamline operations and provide self-service, and offers extensibility to address their evolving needs.

## Why IBM?

IBM offers a vast portfolio of hardware, software and services, including industry-leading data storage products and solutions. Innovative technology, open standards, excellent performance and a broad portfolio of proven storage offerings—all provided by IBM, a recognized industry leader—are just a few of the reasons to consider IBM Spectrum Protect Plus.

## For more information

To learn more about IBM Spectrum Protect Plus, please contact your IBM representative or IBM Business Partner, or visit:

[ibm.com/us-en/marketplace/ibm-spectrum-protect-plus](https://ibm.com/us-en/marketplace/ibm-spectrum-protect-plus)

© Copyright IBM Corporation 2019.

IBM, the IBM logo, and ibm.com are trademarks of International Business Machines Corp., registered in many jurisdictions worldwide. Other product and service names might be trademarks of IBM or other companies. A current list of IBM trademarks is available on the Web at <https://www.ibm.com/legal/us/en/copytrade.shtml>, and select third party trademarks that might be referenced in this document is available at [https://www.ibm.com/legal/us/en/copytrade.shtml#section\\_4](https://www.ibm.com/legal/us/en/copytrade.shtml#section_4).

---



---

Microsoft, Windows, Windows NT, and the Windows logo are trademarks of Microsoft Corporation in the United States, other countries, or both.

VMware, the VMware logo, VMware Cloud Foundation, VMware Cloud Foundation Service, VMware vCenter Server, and VMware vSphere are registered trademarks or trademarks of VMware, Inc. or its subsidiaries in the United States and/or other jurisdictions.

---

All statements regarding IBM's future direction and intent are subject to change or withdrawal without notice, and represent goals and objectives only.